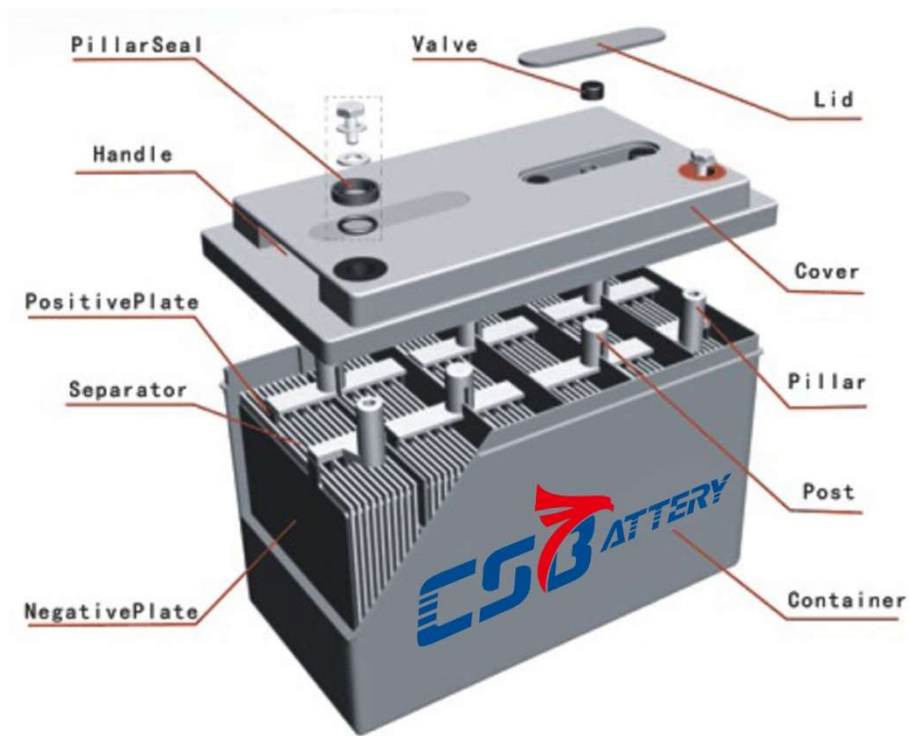




# CSBattery Battery Analyse





Model  
N.W  
G.W  
SIZE

The number  
"CS12-100"  
was ink-stamped  
on the cartons

Brand

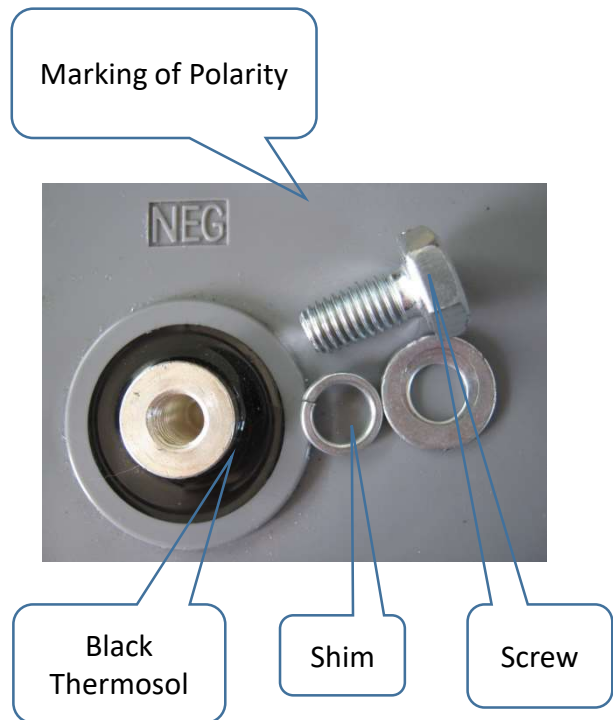
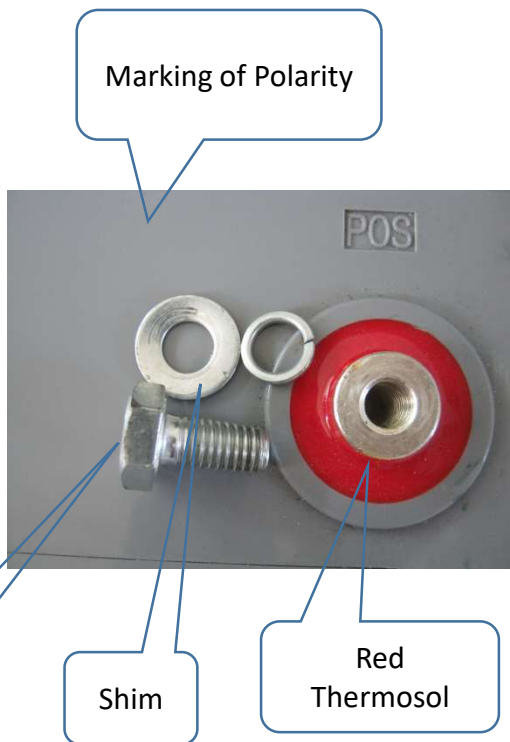
Pallets

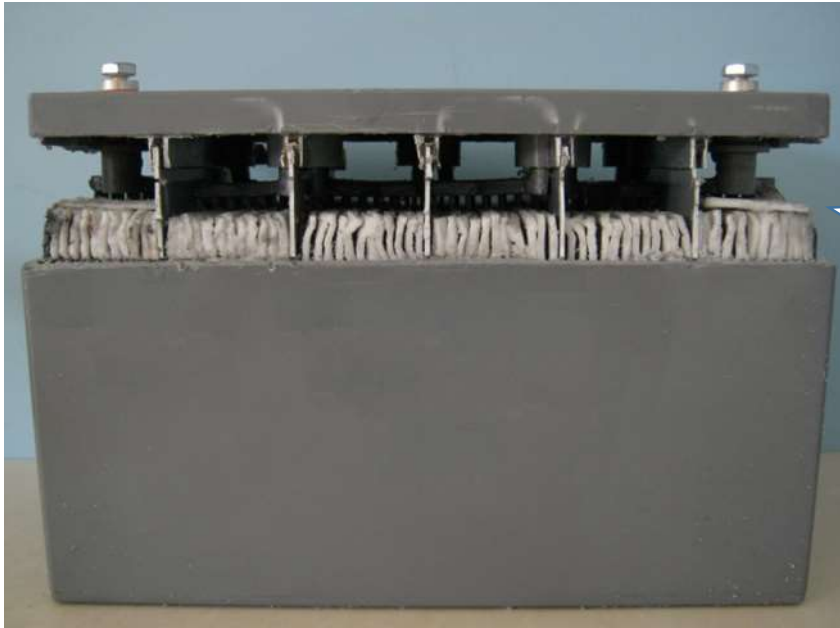
Handle



View of the CS12-100A with packing a. carton packing  
b&c Side view and top view, showing the handle

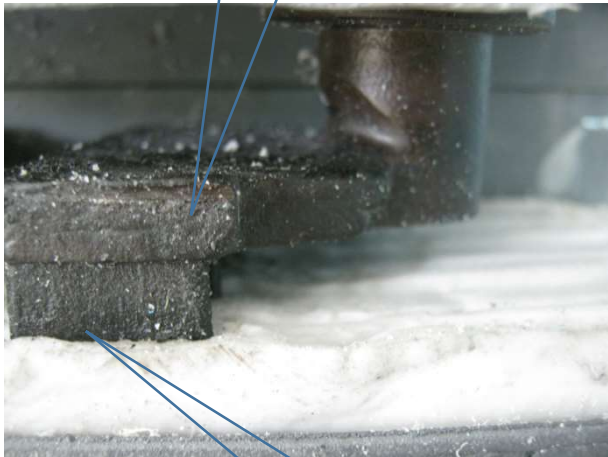






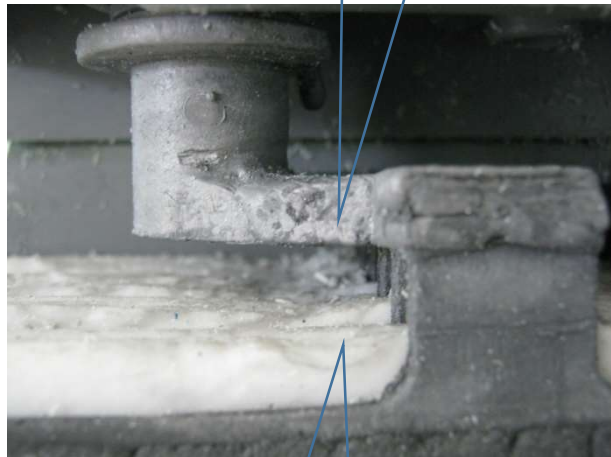
View of exposed in-situ under-lid leaded components of Sample, showing very neat and uniform casting. Note level and consistent strap height. Closer view showing bent terminal straps under

Positive terminal post& strap



End of terminal post straps

Negative terminal post& strap



End of terminal post straps





# ● CSBattery Analyze

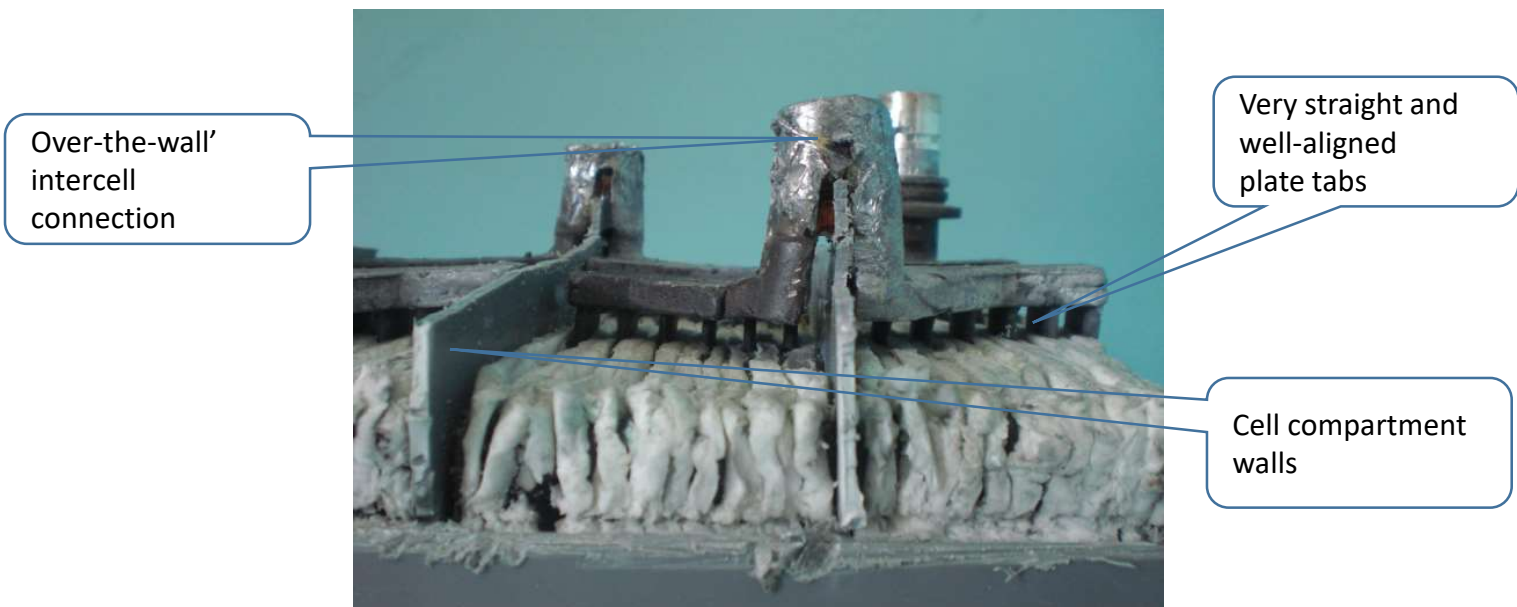
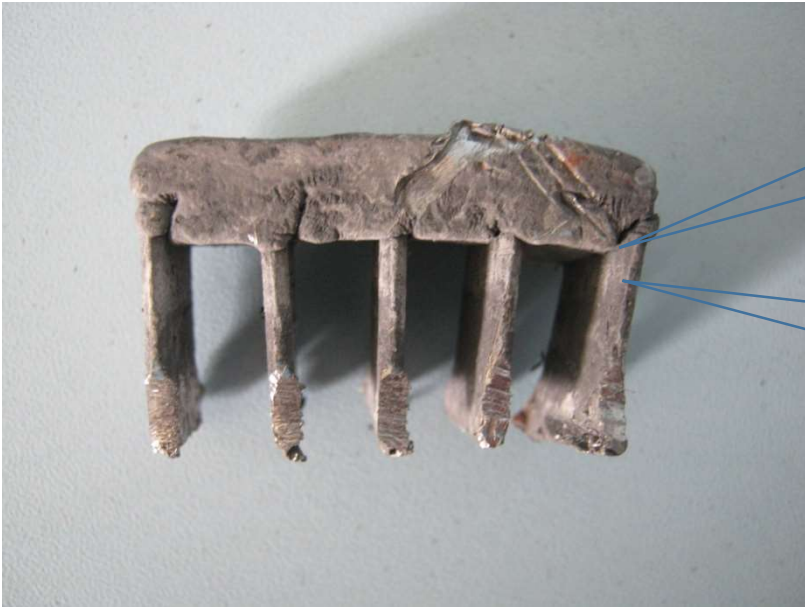




Plate separators

Cut plate tabs



Group bar cross sections.

Positive group bar



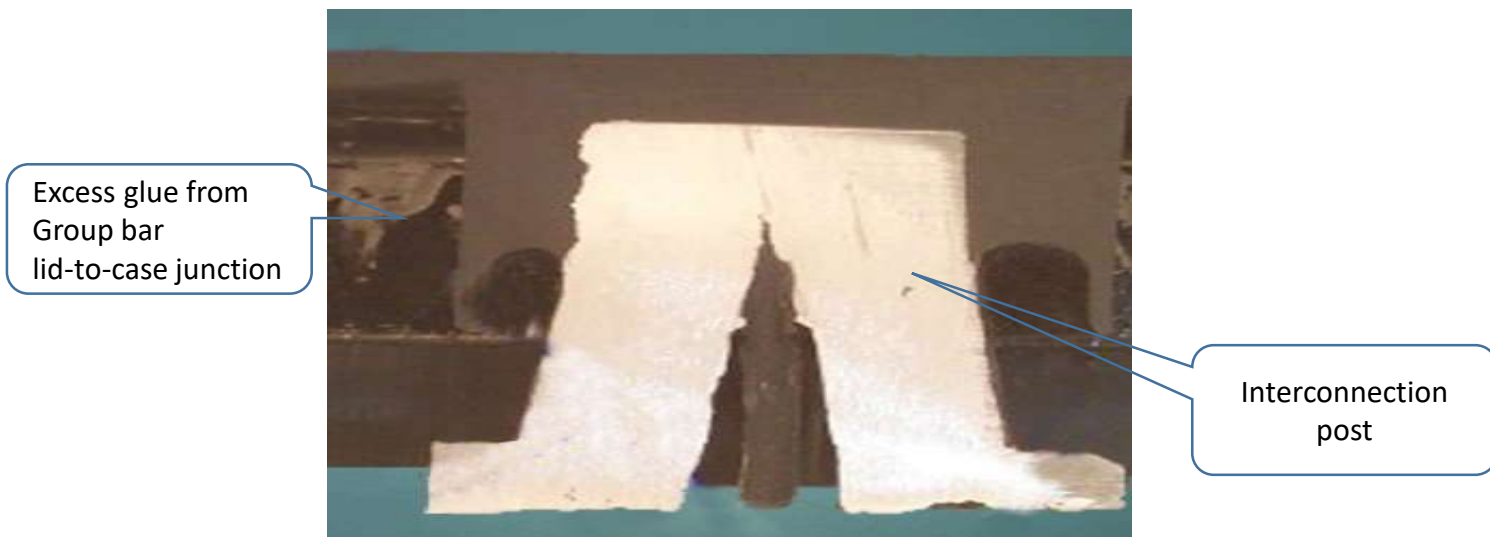
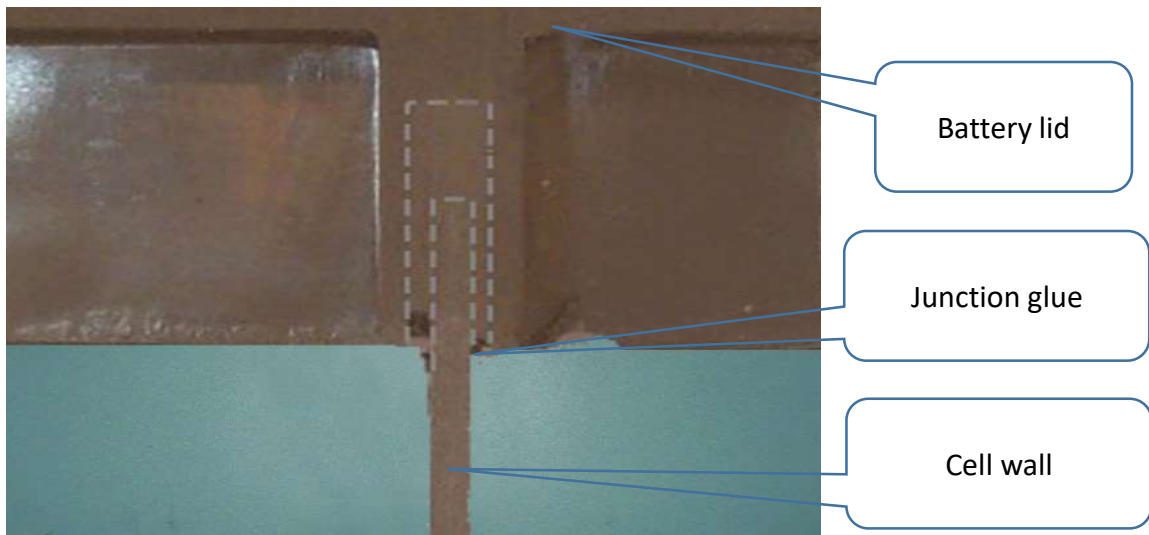
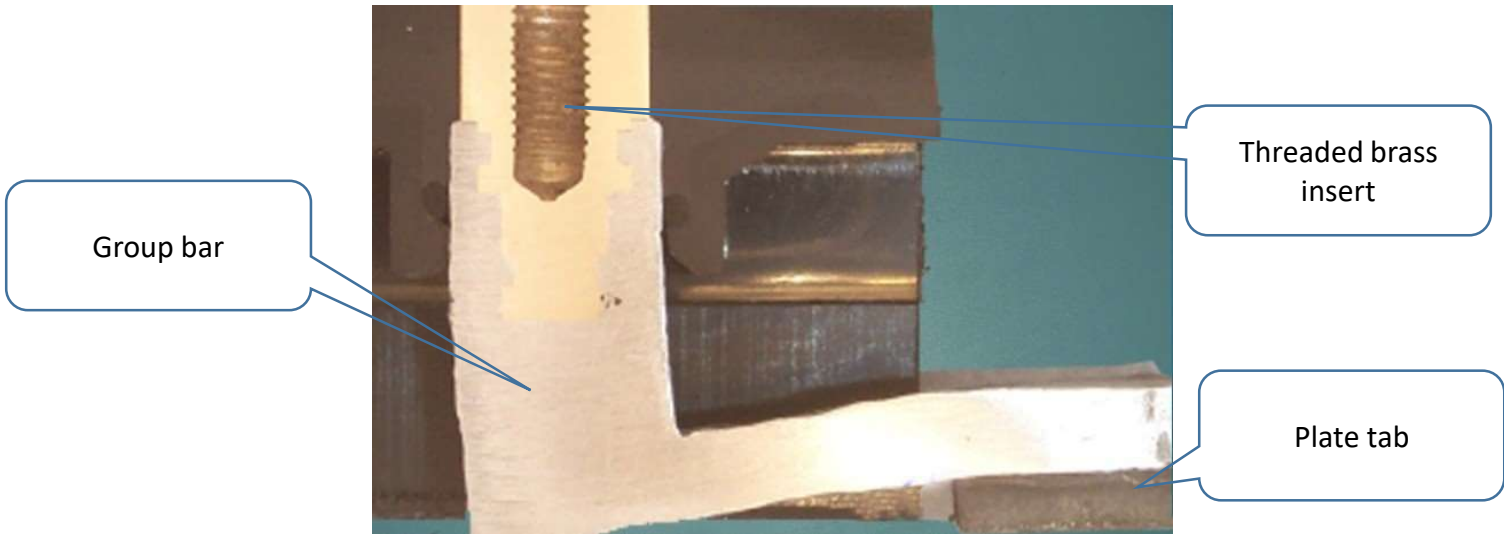
Group bar cross sections.

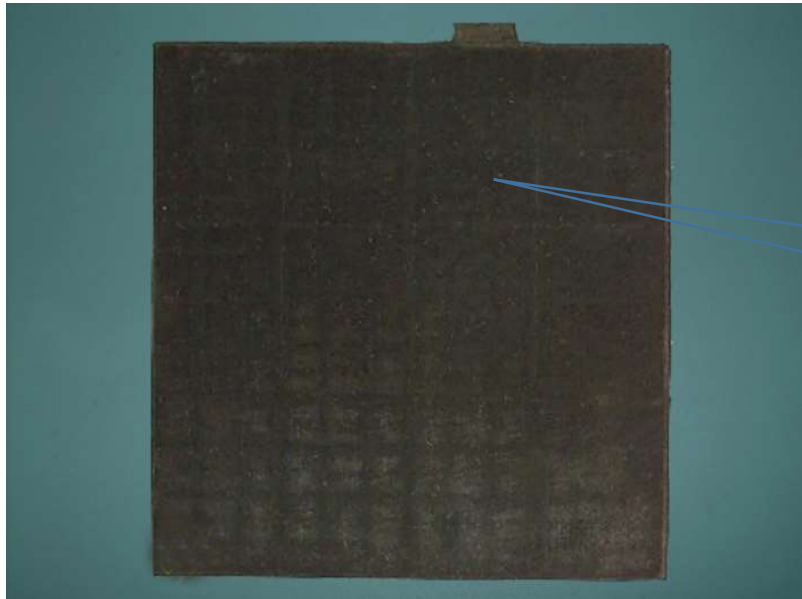
Negative group bar





# ● CSBattery Analyze





Positive Plates



Negative pasted

